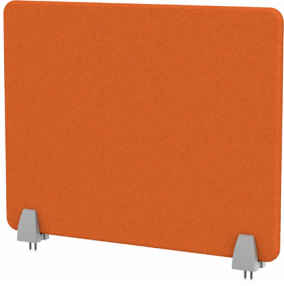


ENCLAVE™ PANEL

FRAMELESS DESK DIVIDER MOUNTING OPTIONS



Top Mount (TM)

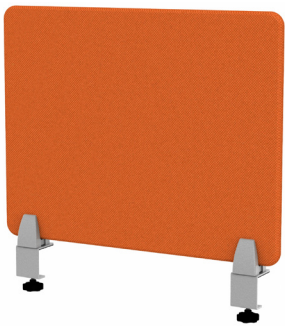
- Use for permanent mounting
- Install anywhere on the desk
- Work on all thickness tops
- Clamp position on panel is adjustable
- Kits include 2 or 3 Top Mounts depending on the width of the desk divider



Top Mount (STM)

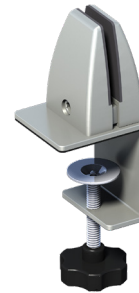


Top Mount (BTM)



Edge Clamp - Knob (CEK)

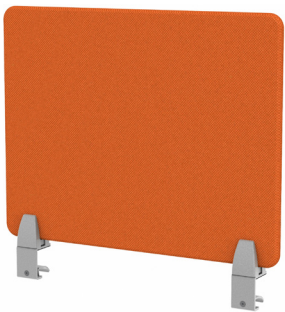
- Fast & easy installation and relocation
- Mount along the edge of work surface
- Clamp fits 3/4" to 2" thick tops
- No screwing or drilling into work surface required
- Clamp position on panel is adjustable
- Kits include 2 or 3 Clamps depending on the width of the desk divider



Edge Clamp - Knob (SCEK)



Edge Clamp - Knob (BCEK)



Edge Clamp - Lever (CEL)

- Patented Lever allows for easy installation with no low hanging knob
- Fast & easy installation and relocation
- Mount along the edge of work surface
- Clamp fits 5/8" to 2" thick tops
- No screwing or drilling into work surface required
- Clamp position on panel is adjustable
- Kits include 2 or 3 Clamps depending on the width of the desk divider

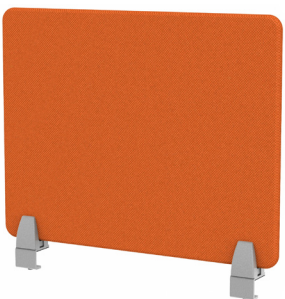
**Patented*



Edge Clamp - Lever (SCEL)



Edge Clamp - Lever (BCEL)



Edge Clamp - Hex (CEH) (Low Profile)

- Fast & easy installation and relocation
- Mount along the edge of work surface
- Clamp fits 1.1" to 1.22" thick tops
- No screwing or drilling into work surface required
- Clamp position on panel is adjustable
- Kits include 2 or 3 Clamps depending on the width of the desk divider
- Use when minimum free space is available on underside of work surface



Edge Clamp - Hex (SCEH)



Middle Clamp - Single (CMS)

- Patented Lever allows for easy installation with no low hanging knob
 - Fast & easy installation and relocation
 - Mount perpendicular to edge of work surface
 - Clamp fits 5/8" to 2" thick tops
 - No screwing or drilling into work surface required
 - Only one clamp required to secure a desk divider
- *Patented*



Middle Clamp - Single (CMS)



Middle Clamp - Double (CMD)

- Patented Lever allows for easy installation with no low hanging knob
 - Fast & easy installation and relocation
 - Mount perpendicular to edge of work surface
 - Clamp fits 5/8" to 2" thick tops
 - No screwing or drilling into work surface required
 - Two clamps for use with larger dividers
 - A center Pad will be included on units 54" and wider
- *Patented*



Middle Clamp - Double (CMD)



Center Pad (54" and wider)

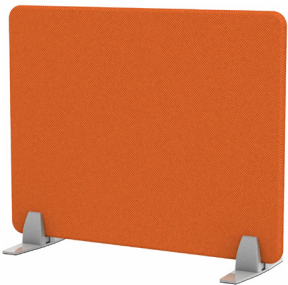


Middle Clamp - Knob (CMKS)

- Fast & easy installation and relocation
- Mount perpendicular to edge of work surface
- Clamp fits 1.1" to 1.22" thick tops
- No screwing or drilling into work surface
- Only one clamp required to secure panel to work surface
- Kit includes 1 middle clamp with knob and one or two metal resting plates depending on width of panel



Middle Clamp - Knob (CMKS)



Free Standing Foot (FS)

- Fast & easy installation and relocation
- Stands freely on top of work surface
- Clamp position on panel is adjustable
- No screwing or drilling into work surface required
- A center Pad will be included on units 54" and wider



Free Standing (SFS)



Center Pad (54" and wider)



Bench Mount (BM)

- Use for permanent mounting
- Fits between back to back workstations with a minimum gap of 2.25"
- Clamp position on panel is adjustable
- Can be used on all thickness tops
- Kit includes 2 to 3 Bench Mounts depending on width of the panel



Bench Mount (SBM)